



**RS-10 1-150A**



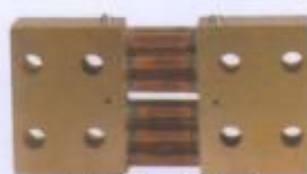
**RS-20 200A**



**RS-30 200A, 250A  
300A, 600A**



**RS-10 800A, 1000A  
1500A**

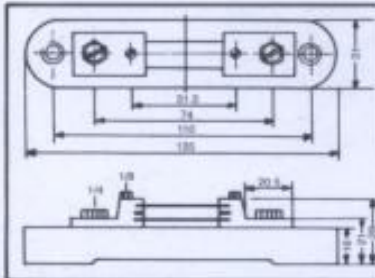


**RS-50 2000A**

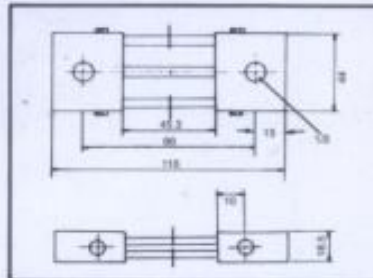


**RS-60 3000A, 4000A  
5000A**

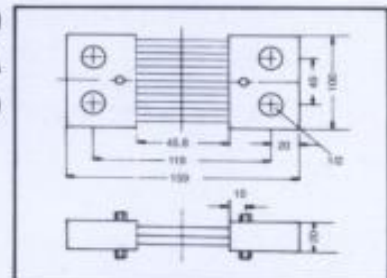
**RS-10**  
150A  
(140g)  
100A



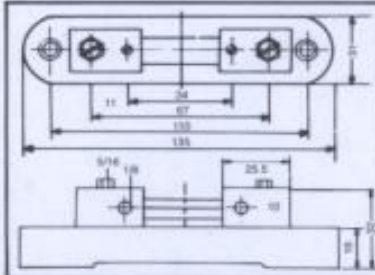
**RS-30**  
400A  
(490g)



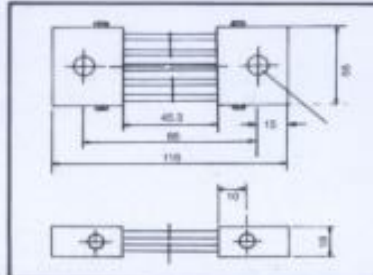
**RS-40**  
1500A  
(2.03kg)



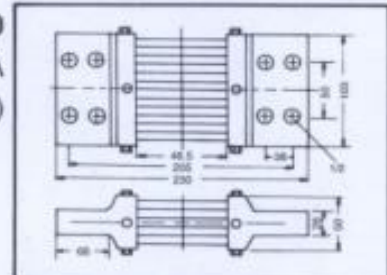
**RS-20**  
200A  
(240g)



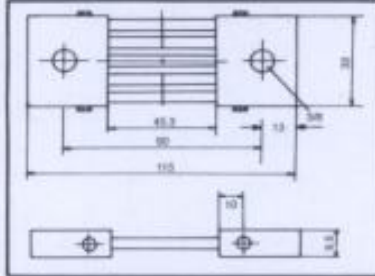
**RS-30**  
500A  
(615g)



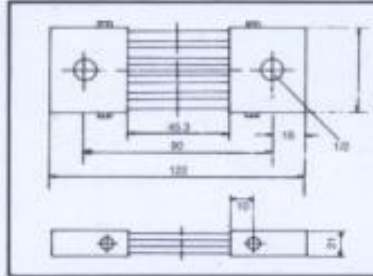
**RS-50**  
2000A  
(5.0kg)



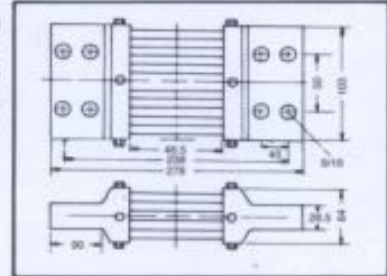
**RS-30**  
200A  
(190g)



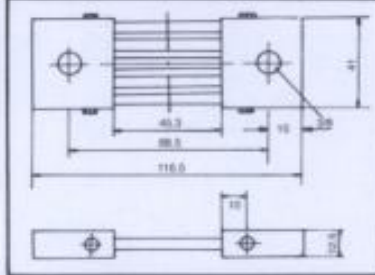
**RS-30**  
600A  
(770g)



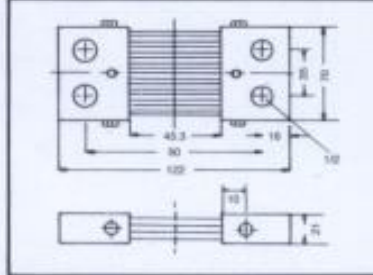
**RS-60**  
3000A  
(7.0kg)



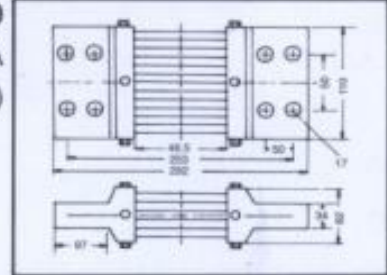
**RS-30**  
250A  
(315g)



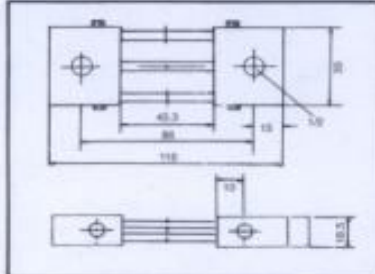
**RS-40**  
800A  
(970g)



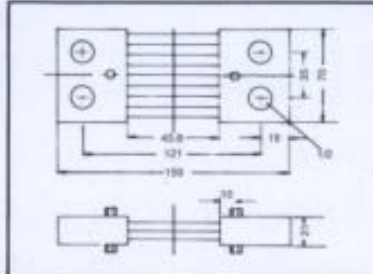
**RS-60**  
4000A  
(9.45kg)



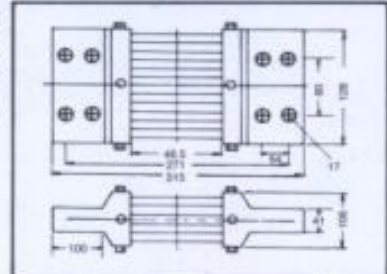
**RS-30**  
300A  
(370g)



**RS-40**  
1000A  
(1400g)



**RS-60**  
5000A  
(15.0kg)



1. Standard Range: 50mV
2. Tolerance on weight and tickness: 5%
3. Specification of MV screws on the part of silver solder: 5/32
4. Other standard for 60mv, 75mv, 100mv solder are available